



**DE VRIES**  
Warmte & Stoomtechniek

# Mobile Boiler Unit – MoBU

## 150 / 225 / 380 kW



- Fully mobile heating system
- Various combination of systems based on client specification
- Reliable and compact design
- User friendly control panel
- Fuel tank with a capacity of 700L
- Easy and fast Camlock® connections



**DE VRIES Warmte & Stoomtechniek BV**  
De Scheysloot 52  
2201 GN Noordwijk

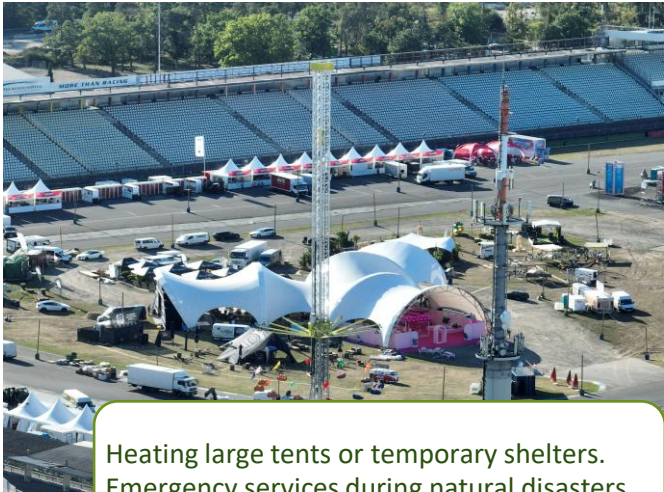
T (071) 401 43 75  
E [info@dvbv.nl](mailto:info@dvbv.nl)  
W [www.dvbv.nl](http://www.dvbv.nl)



# Areas of application of the MoBU

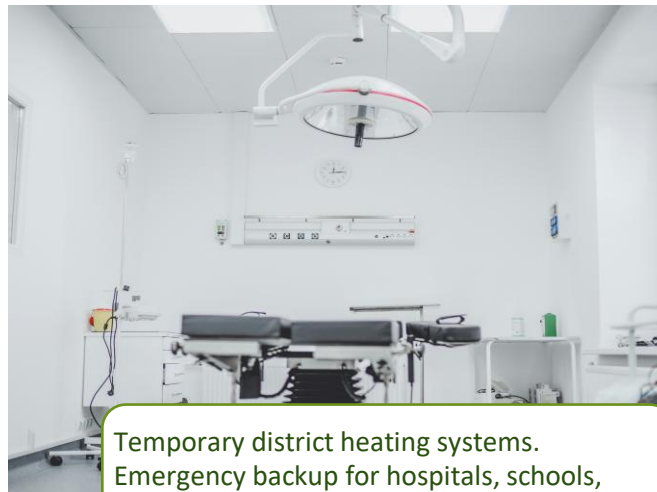
The MoBU offers versatility across a wide range of industries, including utilities, manufacturing, civil engineering, events, and emergency response. Its adaptability is driven by quick-connect features and full mobility—even when fully loaded. With a broad selection of models available, the MoBU can be tailored to specific needs. For example, a tap water system may be essential for domestic use but unnecessary in industrial production settings.

## Events and disaster relief



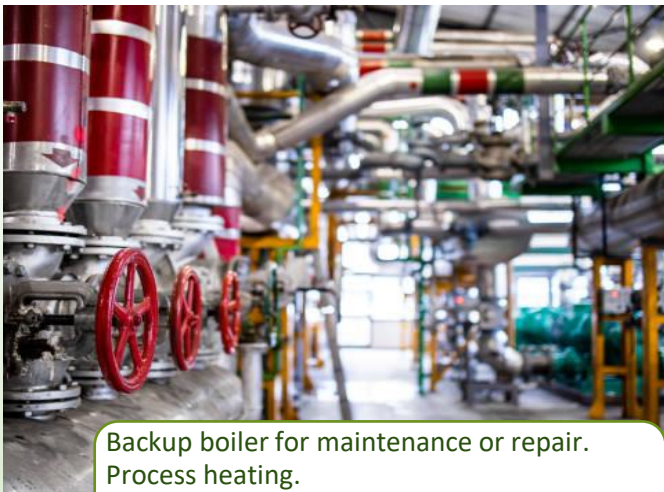
Heating large tents or temporary shelters.  
Emergency services during natural disasters.

## Utility



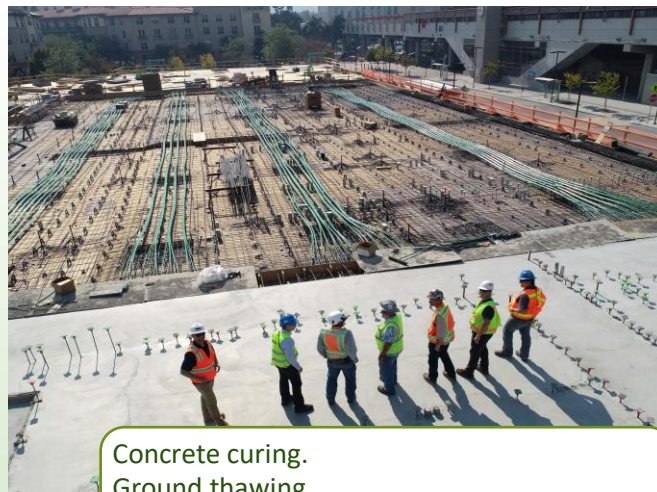
Temporary district heating systems.  
Emergency backup for hospitals, schools,  
hotels, offices, clinics.

## Production and industrial facilities



Backup boiler for maintenance or repair.  
Process heating.  
Start-up and commissioning of new  
installations.

## Construction and civil engineering



Concrete curing.  
Ground thawing.  
Temporary heating for construction workers.



**DE VRIES Warmte & Stoomtechniek BV**  
De Scheysloot 52  
2201 GN Noordwijk

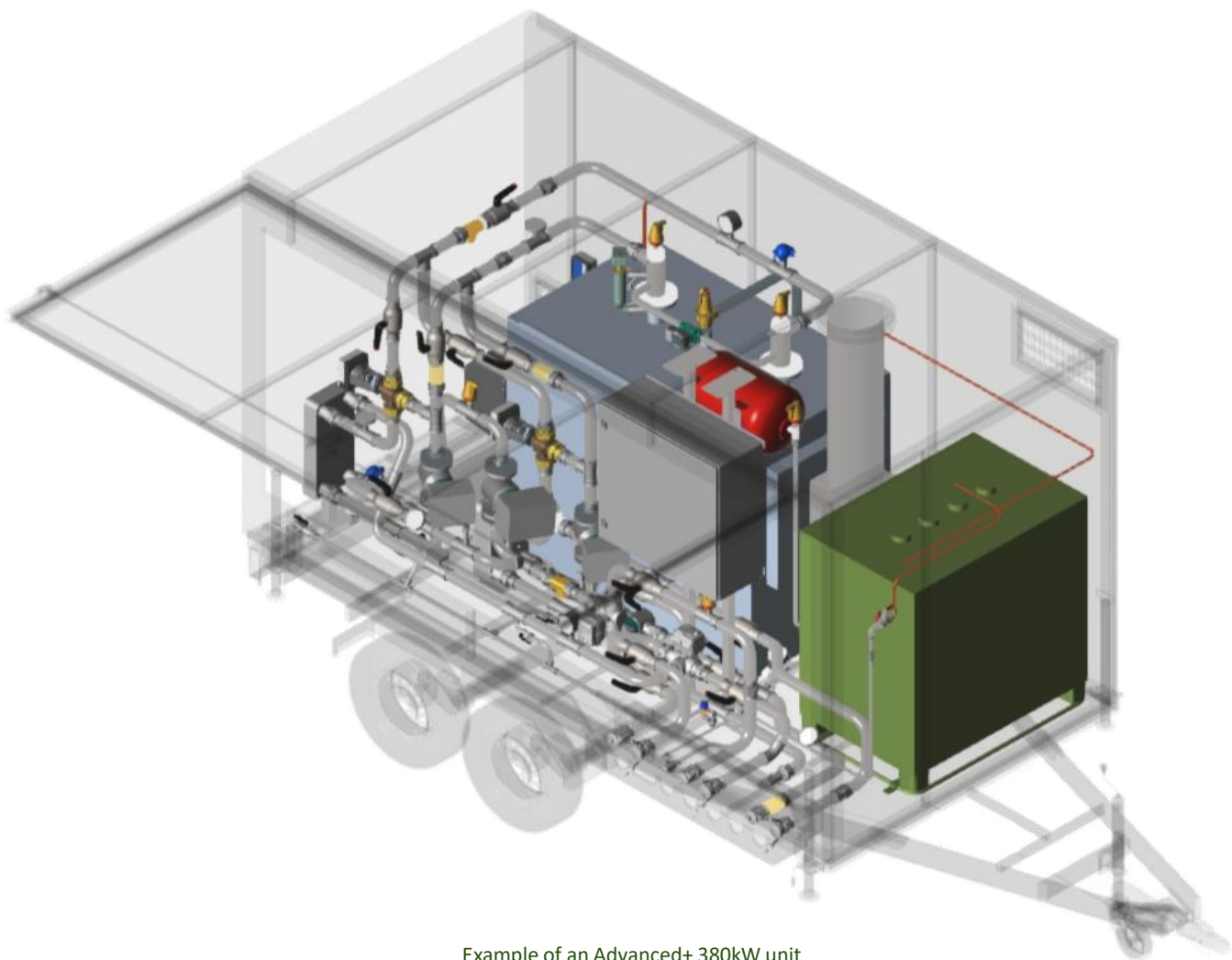
T (071) 401 43 75  
E [info@dvbv.nl](mailto:info@dvbv.nl)  
W [www.dvbv.nl](http://www.dvbv.nl)







# Standard delivery program



Example of an Advanced+ 380kW unit

Robustly designed and built with high-quality components for a long service life. The MoBU offers you enough space and flexibility for maintenance despite its compactness.

Standard delivery program* MoBU 150 / 225 / 380kW					
	Basic	Basic +	Basic ++	Advanced	Advanced +
Primary open	+	+	+	-	-
Primary closed	-	-	-	+	+
Central heating heat exchanger	-	-	-	+	+
Firing/drying protocol	-	+	+	+	+
Tap water	-	-	+	-	+
Control extension	-	+	+	+	+
Pump CV primary	+	+	+	+	+
Pump CV secondary	-	-	-	+	+

\*Other combinations of systems are possible on demand.



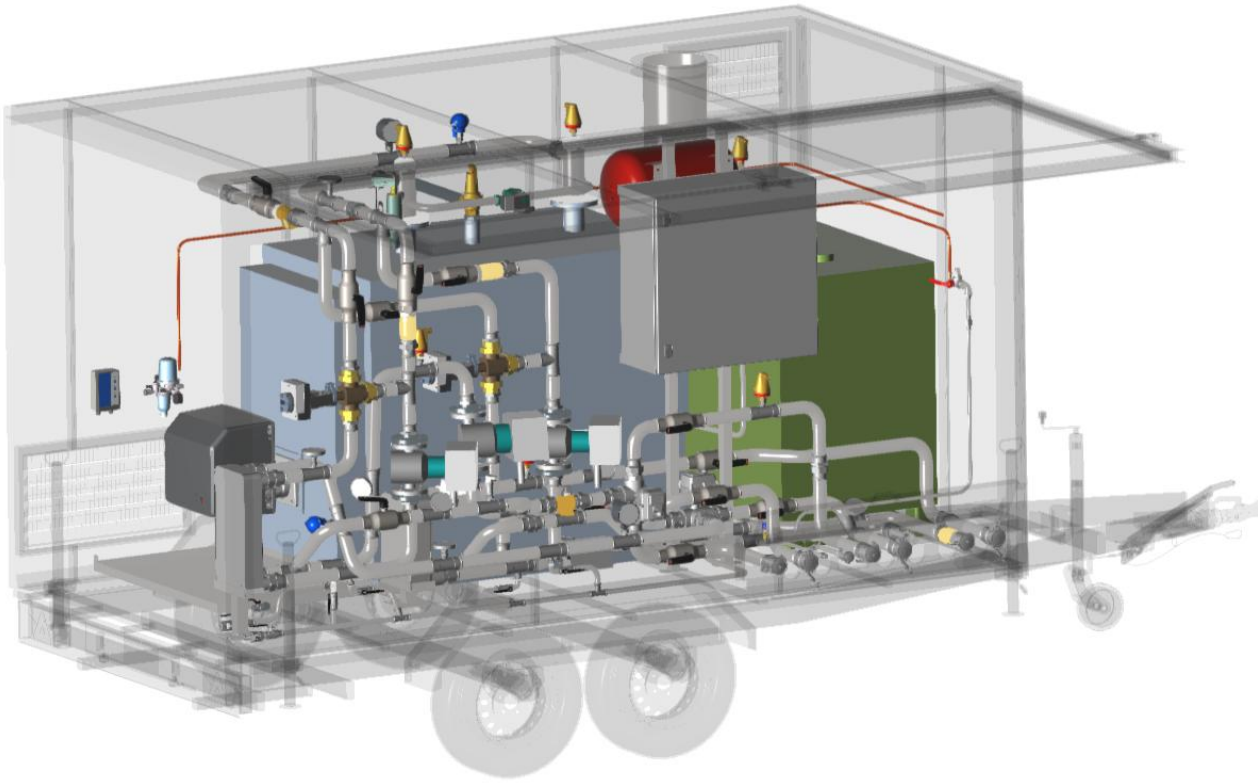
**DE VRIES Warmte & Stoomtechniek BV**  
De Scheysloot 52  
2201 GN Noordwijk

T (071) 401 43 75  
E [info@dvbv.nl](mailto:info@dvbv.nl)  
W [www.dvbv.nl](http://www.dvbv.nl)





# Description of the delivery program



Example of an Advanced+ 380kW unit

## Primary open

### Basic

- The Basic model offers an **open primary** system that connects directly to the boiler. The modules are equipped with a **pump**. The process medium is removed from the boiler.

### Basic+

- On top of the Basic unit, the Basic+ has an integrated **firing/drying protocol** and **control system** for curing concrete.

### Basic ++

- The Basic ++ is equipped with an **open system** and a **pump** like the base units including a **tap water system**, an **integrated firing/drying protocol** and **control system** for curing concrete

## Primary closed

### Advanced

- The Advanced module is very similar to the Basic++ unit, but without the tap water system. It has a **closed primary system**, **two pumps** for the outgoing flow, **firing protocol** and **central heating systems**.

### Advanced +

- The Advanced+ unit is fully equipped for all use cases. It has a **closed primary system**, **two pumps** for the outgoing flow, **firing protocol**, **central heating** and **tap water systems**.





# Technical specifications

Type	Advanced+ 150kW
Boiler capacity [kW]	150
Dimensions L/W/H [mm]	5370 / 2350 / 2660
Maximum weight ++ [kg]	2000
Safety Thermostat [°C]	110
Fuel tank capacity [L]	700
Working pressure max [bar]	5
Current [A]	16
Flow rate CV pump [m3/h]	12,3
Flow rate TW pump [m3/h]	4,2
Total system volume [L]	300
Supply/Return connection	Camlock 2"
Drain/Fill connection	Camlock 1"
Oil connection	Rp ½"
Fuel tank capacity [L]	700
Supply power [V/Hz]	230 V / 50 Hz
Burner control*	High/Low

Type	Advanced+ 380kW
Boiler capacity [kW]	380
Dimensions L/W/H [mm]	5370 / 2350 / 2660
Maximum weight ++ [kg]	2700
Safety Thermostat [°C]	110
Fuel tank capacity [L]	700
Working pressure max [bar]	5
Current [A]	32
Flow rate CV pump [m3/h]	27,6
Flow rate TW pump [m3/h]	11,3
Total system volume [L]	500
Supply/Return connection	Camlock 2"
Drain/Fill connection	Camlock 1"
Oil connection	Rp ½"
Fuel tank capacity [L]	700
Supply power [V/Hz]	400 V / 50 Hz
Burner control*	High/Low

\*The standard burner is a 2-stage light oil burner. A gas burner or a dual fuel light oil/gas burner can be installed on demand.

Type	Advanced+ 225kW
Boiler capacity [kW]	225
Dimensions L/W/H [mm]	5370 / 2350 / 2660
Maximum weight ++ [kg]	2300
Safety Thermostat [°C]	110
Fuel tank capacity [L]	700
Working pressure max [bar]	5
Current [A]	32
Flow rate CV pump [m3/h]	12,3
Flow rate TW pump [m3/h]	4,2
Total system volume [L]	350
Supply/Return connection	Camlock 2"
Drain/Fill connection	Camlock 1"
Oil connection	Rp ½"
Fuel tank capacity [L]	700
Supply power [V/Hz]	400 V / 50 Hz
Burner control*	High/Low

## Safety

- Equipped with automatic safety valve and vents.
- Provides cross ventilation in the trailer.
- Oil leak detection system

## Stand alone

- Able to run on internal fuel tank
- Remote monitoring.
- Fully lockable.
- Track & trace

## User-friendliness

- Touch screen on the control panel
- User-friendly control interface
- Easy Camlock® connection.

## Operation/Maintenance

- Both the central heating and the tap water system have a bypass for external pump connection.
- All equipment is easily accessible for maintenance.



**DE VRIES Warmte & Stoomtechniek BV**  
De Scheysloot 52  
2201 GN Noordwijk

T (071) 401 43 75  
E [info@dvbv.nl](mailto:info@dvbv.nl)  
W [www.dvbv.nl](http://www.dvbv.nl)

